

Model
Wien Super



Security level: Class II according to EN 1143-1
Fire rating: Fire-protected safes according to EN 1047-1 S 60 P

The safe has been approved in accordance with EN 1047-1 in fire class 60 P. The certification was awarded by VdS they have fire and impact tests.

Suitable for the storage of:

- office documents, office equipment
- valuables
- gun (see additional accessories)

Description

Series Wien Super - the safes with one-hour protection from fire S 60 P.

Body: multi-walled body (62 mm thick)
Door: multi-walled door construction (114 mm thick)
Locking: 4-way locking bolt system - incl. fix bolts on the hinge side

Standard option

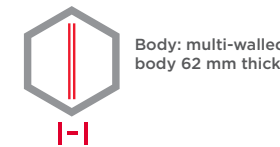
Lock: high security key lock I class VdS with two keys (120 mm)
Boltwork handle: handle, protruding 60 mm
Hinges: external
Door opening angle: 180°
Mounting holes: 1 hole in the floor
Colour: RAL 7035 (light grey)



Model
Wien Super

Art. No.	Model	Outer dimensions*			Inner dimensions			Door light		Anchoring		Weight Kg	Shelves Number	Files Number	Volume Liters
		Height mm	Width mm	Depth mm	Height mm	Width mm	Depth mm	Height mm	Width mm	Bottom number	Backwall number				
44751	Wien Super	1589	892	571	1450	756	393	1444	751	1	-	655	3	42	431
44753	Wien Super	1739	892	571	1600	756	393	1594	751	1	-	707	4	46	475
44755	Wien Super	1905	892	571	1766	756	393	1760	751	1	-	765	4	50	525
44756	Wien Super	1905	892	497	1766	756	319	1760	751	1	-	713	4	50	426
44758	Wien Super **	1905	999	580	1766	863	392	1760	858	1	-	935	4	55	597
44759	Wien Super **	1905	999	717	1766	863	529	1760	858	1	-	1049	4	55	806
44761	Wien Super **	1905	1252	580	1766	1116	392	1760	1111	1	-	1063	4	70	772
44762	Wien Super **	1905	1252	717	1766	1116	529	1760	1111	1	-	1187	4	70	1042
44764	Wien Super **	1905	1288	580	1766	1152	392	1760	1147	1	-	1082	4	75	797
44765	Wien Super **	1905	1288	717	1766	1152	529	1760	1147	1	-	1207	4	75	1076

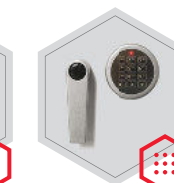
* excluding hinges, handles and fittings ** 2-door



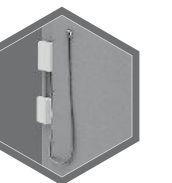
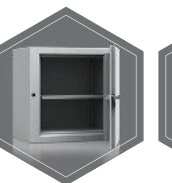
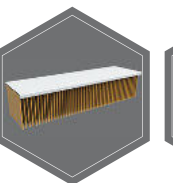
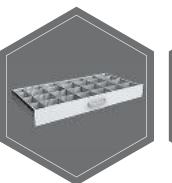
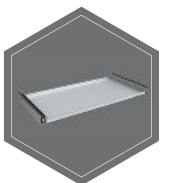
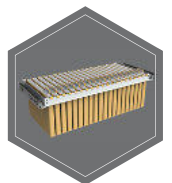
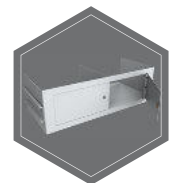
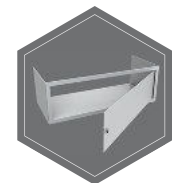
Closure options

Standard option

Options available against surcharge



Accessories available against surcharge



All information concerning weight, color and dimensions are noncommittal and subject to errors and changes. Minor deviations are conditional on the production process. Technical changes, modifications and printing errors reserved. Safes may be top-heavy, during commissioning, please exercise appropriate caution in accordance with the installation guide. Pictograms are not technical description of the product.