

## Model Stuttgart Light



Suitable for the storage of:

- office documents, office equipment
- keys (see additional accessories)

### Description

Series Stuttgart Light - document safes.

**Body:** double-walled body (1 mm thick)

**Door:** double-walled door construction (67,5 mm thick)

**Locking:** door secured by three way moving bolt-work

### Standard option

**Lock:** Ronis 23500

**Boltwork handle:** handle

**Hinges:** internal

**Door opening angle:** 180°

**Mounting holes:** 2 holes in the floor

**Colour:** RAL 7035 (light grey)



## Model Stuttgart Light

Art. No.	Model	Outer dimensions*			Inner dimensions			Door light		Anchoring		Weight Kg	Shelves Number	Files Number	Volume Liters
		Height mm	Width mm	Depth mm	Height mm	Width mm	Depth mm	Height mm	Width mm	Bottom number	Backwall number				
36900	Stuttgart Light	1200	670	500	1058	601	400	1058	601	2	-	90	2	24	254
36901	Stuttgart Light	1950	670	500	1808	601	400	1808	601	2	-	135	4	40	434
36902	Stuttgart Light**	1950	950	500	1808	881	400	1808	881	2	-	170	4	55	637
36903	Stuttgart Light**	1950	1200	500	1808	1131	400	1808	1131	2	-	199	4	75	817

\* excluding hinges, handles and fittings  
\*\* 2-door



Body: double-walled body (1 mm thick)



Door: double-walled door construction (67,5 mm thick)

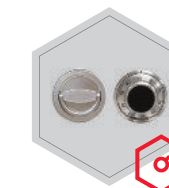
### Closure options

Standard option

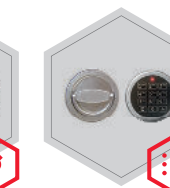
Options available against surcharge



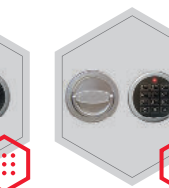
Key lock



Mechanical code lock

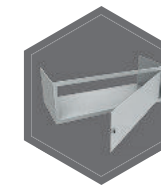


Electronic lock

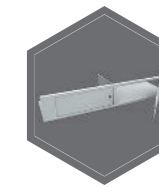


Electronic lock with mechanical emergency

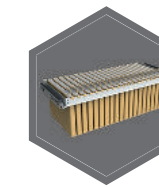
### Accessories available against surcharge



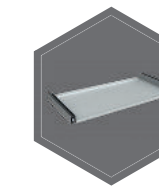
Inner safe



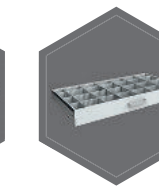
Inner safe with partition wall, 2 - door



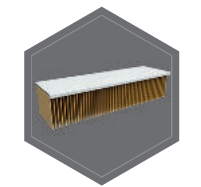
Extensible file frame



Extendable shelf



Extendable drawer for individual arrangement

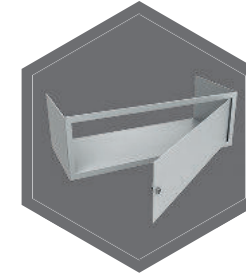


Shelf for hanging files

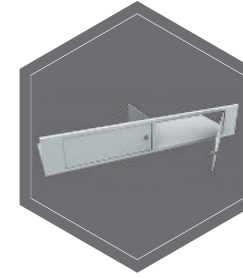


All information concerning weight, color and dimensions are noncommittal and subject to errors and changes. Minor deviations are conditional on the production process. Technical changes, modifications and printing errors reserved. Safes may be top-heavy, during commissioning, please exercise appropriate caution in accordance with the installation guide. Pictograms are not technical description of the product.

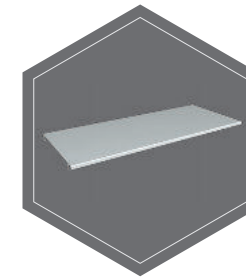
The picture shows an example of a safe for documents - model Hagen 39318 with additional equipment.



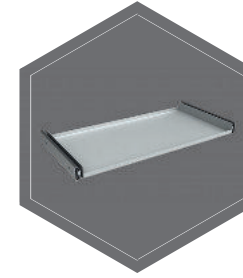
Inner safe



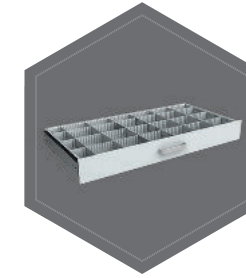
Inner safe with partition wall, 2 - door



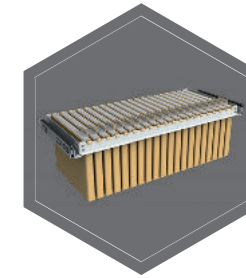
Shelf



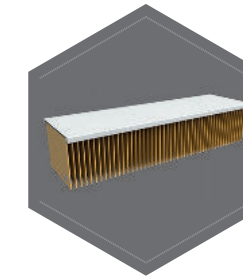
Extendable shelf



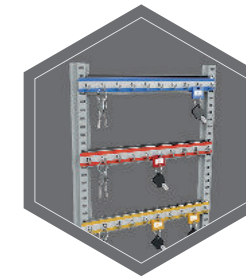
Extendable drawer for individual arrangement



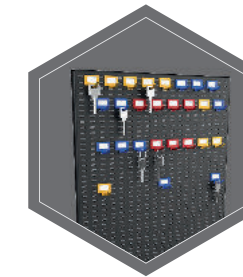
Extendible file frame



Shelf for hanging files



Hook bars



System of hooks on the inner side of the doors