

Model
Stuttgart



Security level: Class S1 according to EN 14450

Suitable for the storage of:

- office documents, office equipment
- gun (see additional accessories)
- keys (see additional accessories)

Description

Series Stuttgart - document safes.

Body: double-walled body (27 mm thick)

Door: double-walled door construction (58 mm thick)

Locking: 4-way locking bolt system - incl. fix bolts on the hinge side

Standard option

Lock: high security key lock I class VdS with two keys (95 mm)

Boltwork handle: handle, protruding 60mm

Hinges: external

Door opening angle: 180°

Mounting holes: 2 holes in the floor and back wall

Colour: RAL 7035 (light grey)



Model
Stuttgart

Art. No.	Model	Outer dimensions*			Inner dimensions			Door light		Anchoring		Weight Kg	Shelves Number	Files Number	Volume Liters
		Height mm	Width mm	Depth mm	Height mm	Width mm	Depth mm	Height mm	Width mm	Bottom number	Backwall number				
37000	Stuttgart	1226	650	500	1088	583	405	1088	562	2	2	105	3	21	256
37001	Stuttgart**	1950	930	500	1812	863	405	1812	842	2	2	195	4	55	633
37002	Stuttgart**	1950	950	500	1812	883	405	1812	862	2	2	205	4	55	647
37003	Stuttgart**	1950	1200	500	1812	1133	405	1812	1112	2	2	240	4	75	831
37004	Stuttgart**	1200	1150	500	1062	1083	405	1062	1062	2	2	190	3	42	465
37005	Stuttgart**	1950	1260	500	1812	1193	405	1812	1172	2	2	250	4	75	875
37006	Stuttgart**	1200	1260	500	1062	1193	405	1062	1172	2	2	205	3	45	513

* excluding hinges, handles and fittings
** 2-door



Body: double-walled body (27 mm thick)

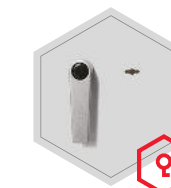


Door: double-walled door construction (58 mm thick)

Closure options

Standard option

Options available against surcharge



Key lock



Mechanical code lock

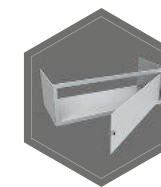


Electronic lock

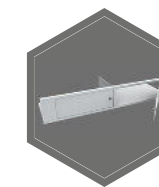


Electronic lock with mechanical emergency

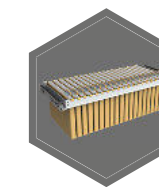
Accessories available against surcharge



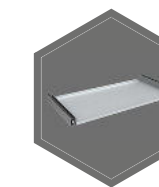
Inner safe



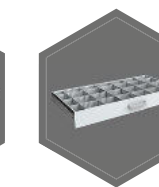
Inner safe with partition wall, 2 - door



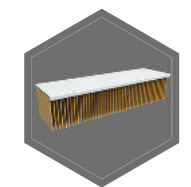
Extensible file frame



Extendable shelf



Extendable drawer for individual arrangement

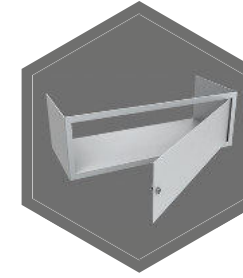


Shelf for hanging files

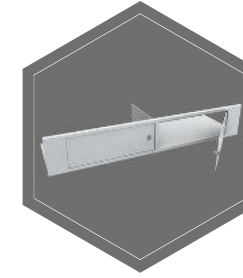


All information concerning weight, color and dimensions are noncommittal and subject to errors and changes. Minor deviations are conditional on the production process. Technical changes, modifications and printing errors reserved. Safes may be top-heavy, during commissioning, please exercise appropriate caution in accordance with the installation guide. Pictograms are not technical description of the product.

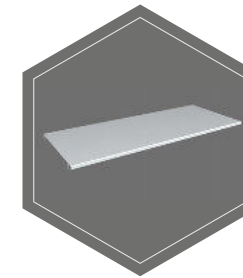
The picture shows an example of a safe for documents - model Hagen 39318 with additional equipment.



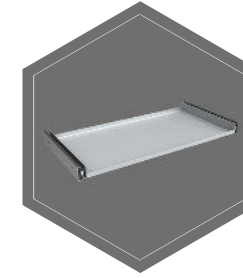
Inner safe



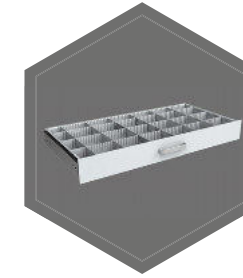
Inner safe with partition wall, 2 - door



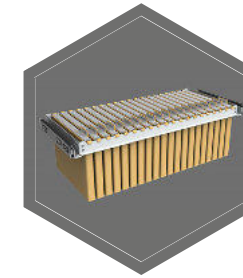
Shelf



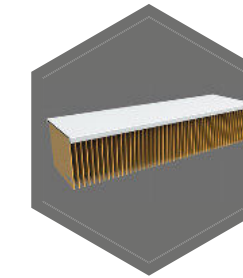
Extendable shelf



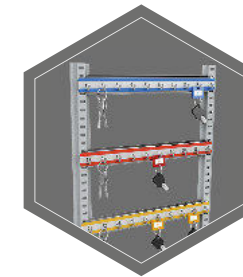
Extendable drawer for individual arrangement



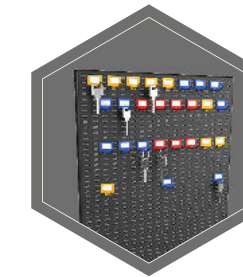
Extensible file frame



Shelf for hanging files



Hook bars



System of hooks on the inner side of the doors