

Model **Stolberg**



Suitable for the storage of:

- office documents, office equipment
- keys (see additional accessories)

Description

Series Stolberg - document safes.

Body: single-walled body (2 mm thick)

Door: double-walled door construction (70 mm thick)

Locking: 4-way locking bolt system - incl. fix bolts on the hinge side

Standard option

Lock: high security key lock I class VdS with two keys (95 mm)

Boltwork handle: handle, protruding 60mm

Hinges: external

Door opening angle: 180°

Mounting holes: 2 holes in the floor and back wall

Colour: RAL 7035 (light grey)



Model **Stolberg**

Art. No.	Model	Outer dimensions*			Inner dimensions			Door light		Anchoring		Weight Kg	Shelves Number	Files Number	Volume Liters
		Height mm	Width mm	Depth mm	Height mm	Width mm	Depth mm	Height mm	Width mm	Bottom number	Backwall number				
37500	Stolberg	740	600	500	736	584	421	674	534	2	2	44	1	14	180
37501	Stolberg**	740	1180	500	736	1164	421	674	1114	2	2	90	1	30	360
37502	Stolberg**	1960	1180	500	1956	1164	421	1894	1114	2	2	220	5	81	958

* excluding hinges, handles and fittings
** 2-door



Body: single-walled body (2 mm thick)

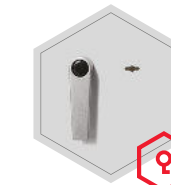


Door: double-walled door construction (70 mm thick)

Closure options

Standard option

Options available against surcharge



Key lock



Mechanical code lock

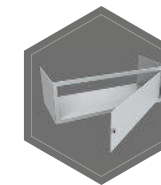


Electronic lock

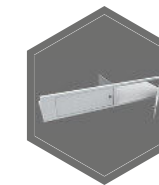


Electronic lock with mechanical emergency

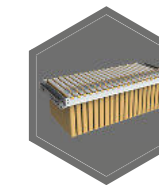
Accessories available against surcharge



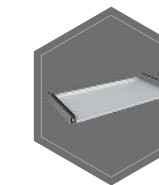
Inner safe



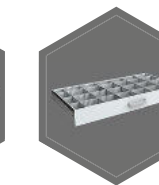
Inner safe with partition wall, 2 - door



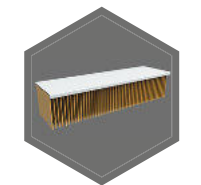
Extensible file frame



Extendable shelf



Extendable drawer for individual arrangement

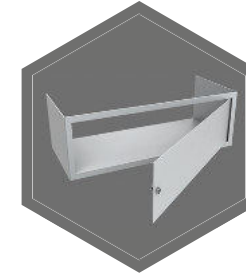


Shelf for hanging files

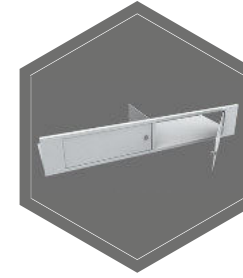


All information concerning weight, color and dimensions are noncommittal and subject to errors and changes. Minor deviations are conditional on the production process. Technical changes, modifications and printing errors reserved. Safes may be top-heavy, during commissioning, please exercise appropriate caution in accordance with the installation guide. Pictograms are not technical description of the product.

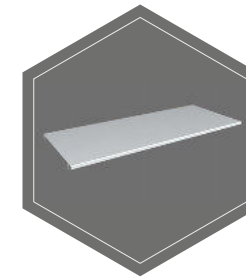
The picture shows an example of a safe for documents - model Hagen 39318 with additional equipment.



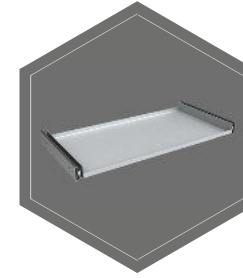
Inner safe



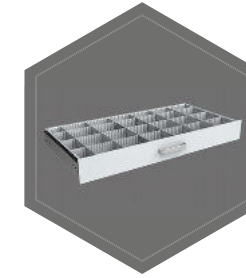
Inner safe with partition wall, 2 - door



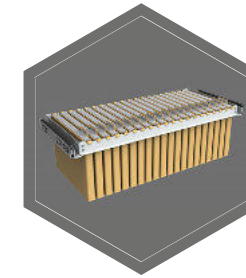
Shelf



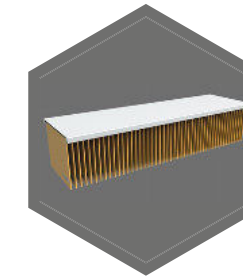
Extendable shelf



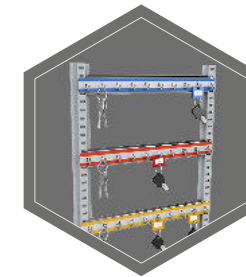
Extendable drawer for individual arrangement



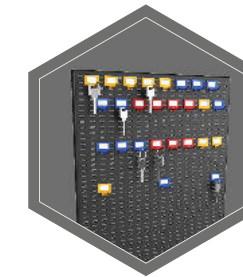
Extendible file frame



Shelf for hanging files



Hook bars



System of hooks on the inner side of the doors