



Security level: Class I according to EN 1143-1

Suitable for the storage of:

- documents
- valuables

Description

Series St. Gallen - high security safe - ECB•S certification.

Body: double-walled body (40 mm thick)

Door: multi-walled door construction (84 mm thick)

Locking: 4-way locking bolt system - incl. overlapping profile on the hinge side

Standard option

Lock: high security key lock I class VdS with two keys (95 mm)

Boltwork handle: Up to a safe height of 950 mm with knob, from safe height of 1130 mm with handle

Hinges: external

Door opening angle: 180°

Mounting holes: 1 hole in the floor

Colour: RAL 7035 (light grey)

Art. No.	Model	Outer dimensions*			Inner dimensions			Door light		Anchoring		Weight Kg	Shelves Number	Files Number	Volume Liters
		Height mm	Width mm	Depth mm	Height mm	Width mm	Depth mm	Height mm	Width mm	Bottom number	Backwall number				
40210.00	St. Gallen	350	390	265	270	300	145	238	294	1	-	41	1	-	12
40211.00	St. Gallen	430	420	445	350	330	325	318	324	1	-	61	1	4	38
40212.00	St. Gallen	600	420	445	520	330	325	488	324	1	-	76	1	6	56
40213.00	St. Gallen	780	420	445	700	330	325	668	324	1	-	91	1	8	75
40214.00	St. Gallen	950	420	445	870	330	325	838	324	1	-	107	2	10	93
40215.00	St. Gallen	1130	570	485	1050	480	365	1018	474	1	-	153	2	18	184
40216.00	St. Gallen	1480	570	485	1400	480	365	1368	474	1	-	189	3	24	245
40218.00	St. Gallen	1830	570	485	1750	480	365	1718	474	1	-	225	4	30	307
40222.00	St. Gallen **	1130	1245	485	1050	1155	365	1018	1144	1	-	268	2	45	443
40223.00	St. Gallen **	1300	1245	485	1220	1155	365	1188	1144	1	-	296	3	51	514
40225.00	St. Gallen **	1830	1245	600	1750	1155	480	1718	1144	1	-	415	4	75	970

* excluding hinges, handles and fittings ** 2-door



Body: double-walled body (40 mm thick)

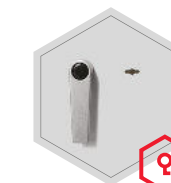


Door: multi-walled door construction (84 mm thick)

Closure options

Standard option

Options available against surcharge



Key lock



Mechanical code lock

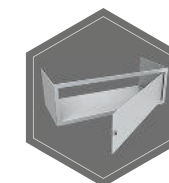


Electronic lock

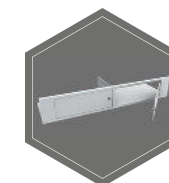


Electronic lock with mechanical emergency (Art. 40212.00-40225.00)

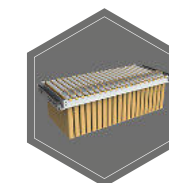
Accessories available against surcharge



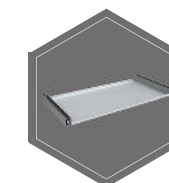
Inner safe



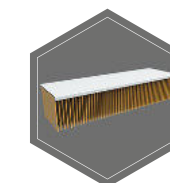
Inner safe with partition wall, 2 - door



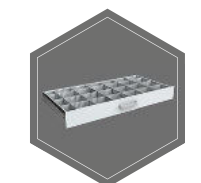
Extensible file frame



Extendable shelf



Shelf for hanging files



Extendable drawer for individual arrangement



All information concerning weight, color and dimensions are noncommittal and subject to errors and changes. Minor deviations are conditional on the production process. Technical changes, modifications and printing errors reserved. Safes may be top-heavy, during commissioning, please exercise appropriate caution in accordance with the installation guide. Pictograms are not technical description of the product.