



Security level: Class D-I according to EN 1143-2

The values can be deposited in the so called Safe-bags, common envelopes, cash boxes and similar containers. Depending on the tenacity of the deposit container, the dimensions of values to be stored can be as follows:
thickness 70 mm / width 220 mm / length 320 mm.

Models with 1280 mm height made with wall brackets for shelving (shelf - option against surcharge).

- Suitable for the storage of:
- office documents, office equipment
 - valuables

Description

St. Gallen Deposit series - drawer deposit safes.

- Body:** multi-walled body (40 mm thick)
- Door:** multi-walled door construction (84 mm thick)
- Locking:** 4-way locking bolt system - incl. overlapping profile on the hinge side

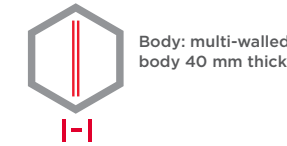
Standard option

- Lock:** safe and the drawer, each equipped with high security key lock I class VdS with two keys
- Boltwork handle:** main door with the knob protruding 12 mm, the drawer equipped with the grip
- Hinges:** external
- Door opening angle:** 180°
- Mounting holes:** 4 holes in the floor, 1 blind hole in the back wall
- Colour:** RAL 7035 (light grey)



Art. No.	Model	Outer dimensions*			Inner dimensions			Door light		Anchoring		Drawer	Weight
		H mm	W mm	D mm	H mm	W mm	D mm	H mm	W mm	Bottom number	Backwall number		
36260.00	St. Gallen Deposit	930	570	510	265	480	390	508	474	4	1**	in front	165
36261.00	St. Gallen Deposit	1280	570	510	615	480	390	858	474	4	1**	in front	205
36262.00	St. Gallen Deposit	930	570	510	265	480	390	508	474	4	1**	in the back	165
36263.00	St. Gallen Deposit	1280	570	510	615	480	390	858	474	4	1**	in the back	205
36264.00	St. Gallen Deposit	930	730	510	265	640	390	508	634	4	1**	drawer in front with money partition	190
36265.00	St. Gallen Deposit	1280	730	510	615	640	390	858	634	4	1**	drawer in front with money partition	240
36266.00	St. Gallen Deposit	930	570	510+270	265	480	390	508	474	4	1**	drawer in the back 270 mm	180
36267.00	St. Gallen Deposit	1280	570	510+270	615	480	390	858	474	4	1**	drawer in the back 270 mm	225

* excluding hinges, handles and fittings ** not drilled



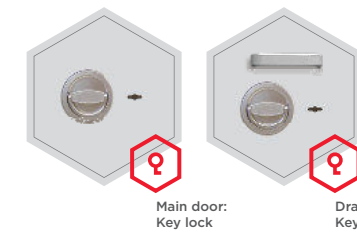
Body: multi-walled body 40 mm thick



Door: multi-walled door construction 84 mm thick

Closure options

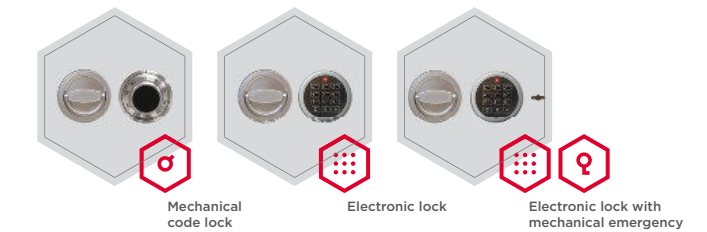
Standard option



Main door: Key lock

Drawer: Key lock

Options available against surcharge

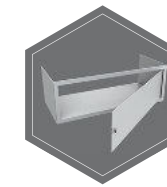


Mechanical code lock

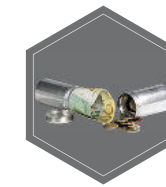
Electronic lock

Electronic lock with mechanical emergency

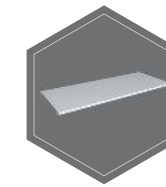
Accessories available against surcharge



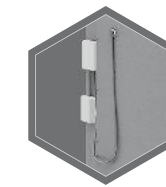
Inner safe



Safe box



shelf



Prepared for alarm system/ alarm system



RAL 7035



RAL 9006



RAL 7024

All information concerning weight, color and dimensions are noncommittal and subject to errors and changes. Minor deviations are conditional on the production process. Technical changes, modifications and printing errors reserved. Safes may be top-heavy, during commissioning, please exercise appropriate caution in accordance with the installation guide. Pictograms are not technical description of the product.