

Model  
**save4ever II**



**Security level: Class II according to EN 1143-1**

Suitable for the storage of:

- documents
- valuables

**Description**

Series **save4ever II** - high security safe - ECB•S certification.

**Body:** multi-walled body (50 mm thick)

**Door:** multi-walled door construction (106 mm thick)

**Locking:** 4-way locking bolt system - incl. overlapping profile on the hinge side

**Standard option**

**Lock:** high security key lock I class VdS with two keys (120 mm)

**Boltwork handle:** handle, protruding 60 mm

**Hinges:** external

**Door opening angle:** 180°

**Mounting holes:** 1 hole in the floor, 1 on the backwall (not drilled) up to 1/3 height

**Colour:** RAL 7035, RAL 7024



Model  
**save4ever II**

Art. No.	Model	Outer dimensions*			Inner dimensions			Door light		Anchoring		Weight Kg	Shelves Number	Files Number	Volume Liters	Hooks Number
		Height mm	Width mm	Depth mm	Height mm	Width mm	Depth mm	Height mm	Width mm	Bottom number	Backwall number					
413100.00	save4ever II	450	450	465	350	340	305	318	334	1	1**	109	1	4	36	5***
413101.00	save4ever II	550	550	465	450	440	305	418	434	1	1**	145	1	7	60	5***
413102.00	save4ever II	700	550	465	600	440	305	568	434	1	1**	173	1	9	81	5***
413103.00	save4ever II	850	550	465	750	440	305	718	434	1	1**	201	1	10	101	5***
413104.00	save4ever II	1050	550	465	950	440	305	918	434	1	1**	240	2	15	127	5***
413105.00	save4ever II	1200	550	465	1100	440	305	1068	434	1	1**	268	2	18	148	5***
413106.00	save4ever II	1350	550	465	1250	440	305	1218	434	1	1**	297	2	20	168	5***

\* excluding hinges, handles and fittings \*\* not drilled \*\*\* hook strip for self assembly



Body: multi-walled body (50 mm thick)



Door: multi-walled door construction (106 mm thick)

**Closure options**

Standard option

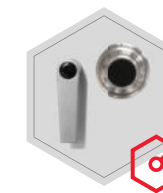
Options available against surcharge



Key lock



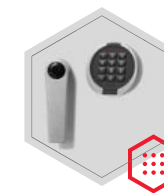
Electronic lock Solar Basic



Mechanical code lock



Electronic lock Solar Business



Electronic lock Primor 3000 level 5



Electronic lock Primor 3000 level 15



Electronic lock B 30 (Excl. 413100.00)



All information concerning weight, color and dimensions are noncommittal and subject to errors and changes. Minor deviations are conditional on the production process. Technical changes, modifications and printing errors reserved. Safes may be top-heavy, during commissioning, please exercise appropriate caution in accordance with the installation guide. Pictograms are not technical description of the product.