



Security level: Class S1 according to EN 14450
Security level: according to A VDMA 24992 -
Conditions May '95

Drop box in front, with key lock.

Max. deposit dimensions H*B*T 280*400*20 mm.

Suitable for the storage of:

- office documents, office equipment
- valuables

Description
 Saltzgitter series - deposit safes.

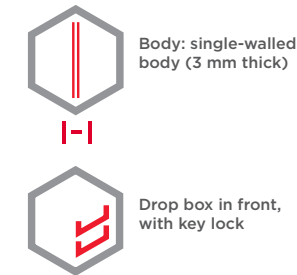
Body: single-walled body (3 mm thick)
Door: double-walled door construction (52 mm thick)
Locking: 4-way locking bolt system

Standard option
Lock: high security key lock I class VdS with two keys
Boltwork handle: knob protruding 12 mm
Hinges: internal
Door opening angle: 90°
Mounting holes: 2 holes in the floor and in backwall
Colour: RAL 7035 (light grey)



Art. No.	Model	Outer dimensions*			Inner dimensions			Door light		Anchoring		Weight Kg	Shelves Number	Volume Liters
		Height mm	Width mm	Depth mm	Height mm	Width mm	Depth mm	Height mm	Width mm	Bottom number	Backwall number			
35800	Saltzgitter	800	500	400	273	482	334	382	363	2	2	75	1	44
35801	Saltzgitter	1000	500	400	473	482	334	582	363	2	2	90	1	76
35802	Saltzgitter	1200	500	400	673	482	334	782	363	2	2	115	1	108

* excluding hinges, handles and fittings

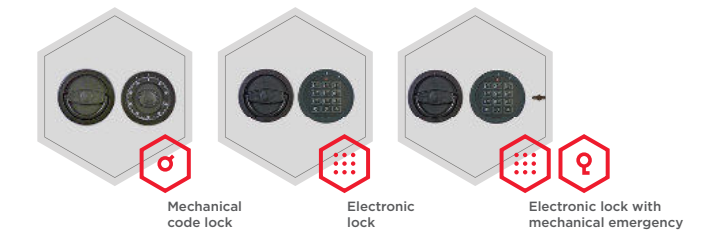


Closure options

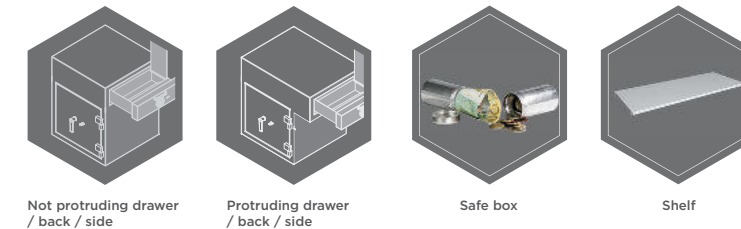
Standard option



Options available against surcharge



Accessories available against surcharge



All information concerning weight, color and dimensions are noncommittal and subject to errors and changes. Minor deviations are conditional on the production process. Technical changes, modifications and printing errors reserved. Safes may be top-heavy, during commissioning, please exercise appropriate caution in accordance with the installation guide. Pictograms are not technical description of the product.

The picture shows an example of a safe for deposit - model Emden Art. No. 35811 with additional equipment.



Art. No. 35801

