



**Security level: Class II according to EN 1143-1**  
**Fire rating: Fire-protected safes according to EN 1047-1 S 120 P**

The safe has been approved in accordance with EN 1047-1 in fire class 120 P. The certification was awarded by VdS they have fire and impact tests.

Suitable for the storage of:

- office documents, office equipment
- valuables

**Description**

Series Prag - the safes with two-hour protection from fire S 120 P.

**Body:** multi-walled body (86 mm thick)  
**Door:** multi-walled door construction (135 mm thick)  
**Locking:** 4-way locking bolt system - incl. fix bolts on the hinge side

**Standard option**

**Lock:** high security key lock I class VdS with two keys (120 mm)  
**Boltwork handle:** handle, protruding 60 mm  
**Hinges:** external  
**Door opening angle:** 180°  
**Mounting holes:** 1 (2) holes in the floor  
**Colour:** RAL 7035 (light grey)

Art. No.	Model	Outer dimensions*			Inner dimensions			Door light		Anchoring		Weight Kg	Shelves Number	Files Number	Volume Liters
		Height mm	Width mm	Depth mm	Height mm	Width mm	Depth mm	Height mm	Width mm	Bottom number	Backwall number				
46100	Prag	550	632	573	317	448	350	304	436	1	-	240	1	3 ***	50
46101	Prag	600	632	573	367	448	350	354	436	1	-	264	1	6	58
46102	Prag	1068	619	560	769	435	352	739	390	1	-	389	2	10	118
46103	Prag	1418	821	573	1110	637	350	1072	574	1	-	623	2	24	247
46104	Prag	1618	821	573	1310	637	350	1272	574	1	-	700	3	24	292
46105	Prag	1811	821	573	1503	637	350	1465	574	1	-	774	3	32	335
46106	Prag **	1821	1377	573	1507	1193	350	1465	1121	2	-	1139	3	64	613
46107	Prag **	1821	1775	573	1507	1591	350	1465	1519	2	-	1452	6	84	818
46108	Prag **	2042	1775	573	1728	1591	350	1686	1519	2	-	1605	8	105	937

\* excluding hinges, handles and fittings \*\* 2-door \*\*\* crosswise



Body: multi-walled body 86 mm thick



Door: multi-walled door construction 135 mm thick

**Closure options**

Standard option

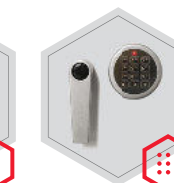
Options available against surcharge



Key lock



Mechanical code lock

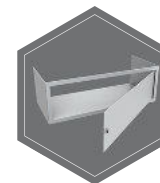


Electronic lock

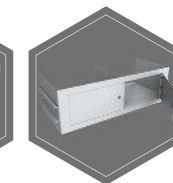


Electronic lock with mechanical emergency

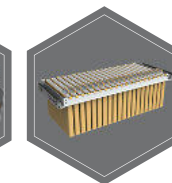
**Accessories available against surcharge**



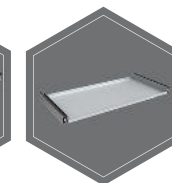
Inner safe



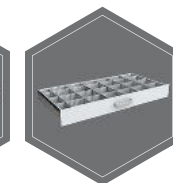
Inner safe with partition wall, 2 - door



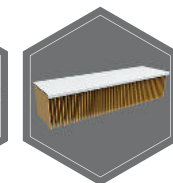
Extensible file frame



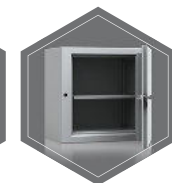
Extendable shelf



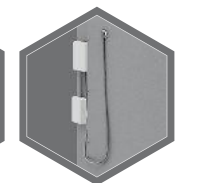
Extendable drawer for individual arrangement



Shelf for hanging files



Floppy disk insert S6ODIS



Prepared for alarm system / alarm system



All information concerning weight, color and dimensions are noncommittal and subject to errors and changes. Minor deviations are conditional on the production process. Technical changes, modifications and printing errors reserved. Safes may be top-heavy, during commissioning, please exercise appropriate caution in accordance with the installation guide. Pictograms are not technical description of the product.