

Model  
**Potsdam**



**Security level: Class S1 according to EN 14450**

Suitable for the storage of:

- office documents, office equipment
- gun (see additional accessories)
- keys (see additional accessories)

**Description**

Series Potsdam - document safes.

**Body:** double-walled body (30 mm thick)

**Door:** double-walled door construction (81 mm thick)

**Locking:** 4-way locking bolt system - incl. fix bolts on the hinge side

**Standard option**

**Lock:** high security key lock I class VdS with two keys (95 mm)

**Boltwork handle:** handle, protruding 60mm

**Hinges:** external

**Door opening angle:** 180°

**Mounting holes:** 2 holes in the floor and back wall

**Colour:** RAL 7035 (light grey)



Model  
**Potsdam**

Art. No.	Model	Outer dimensions*			Inner dimensions			Door light		Anchoring		Weight Kg	Shelves Number	Files Number	Volume Liters
		Height mm	Width mm	Depth mm	Height mm	Width mm	Depth mm	Height mm	Width mm	Bottom number	Backwall number				
37200	Potsdam	1250	700	500	1190	628	385	1101	551	2	2	125	3	24	287
37201	Potsdam	1500	700	500	1440	628	385	1351	551	2	2	145	4	32	348
37202	Potsdam	1950	700	500	1890	628	385	1801	551	2	2	180	4	41	456
37203	Potsdam	1950	950	550	1890	878	435	1801	801	2	2	230	4	57	721
37204	Potsdam**	1950	950	550	1890	878	435	1801	801	2	2	250	4	57	721
37205	Potsdam**	1950	1260	550	1890	1188	435	1801	1111	2	2	320	4	78	976
37206	Potsdam**	1200	1260	550	1140	1188	435	1051	1111	2	2	220	2	45	589

\* excluding hinges, handles and fittings  
\*\* 2-door



Body: double-walled body (30 mm thick)

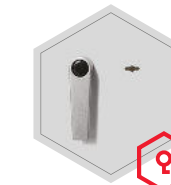


Door: double-walled door construction (81 mm thick)

**Closure options**

Standard option

Options available against surcharge



Key lock



Mechanical code lock

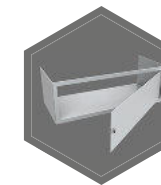


Electronic lock

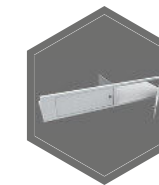


Electronic lock with mechanical emergency

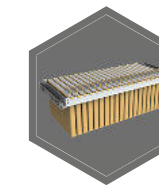
**Accessories available against surcharge**



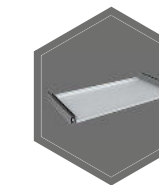
Inner safe



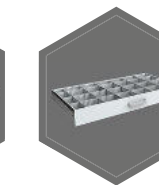
Inner safe with partition wall, 2 - door



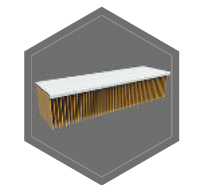
Extensible file frame



Extendable shelf



Extendable drawer for individual arrangement

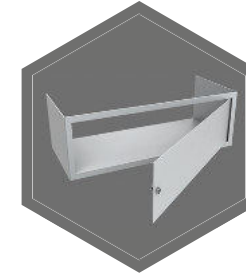


Shelf for hanging files

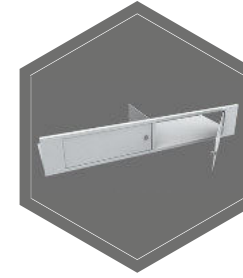


All information concerning weight, color and dimensions are noncommittal and subject to errors and changes. Minor deviations are conditional on the production process. Technical changes, modifications and printing errors reserved. Safes may be top-heavy, during commissioning, please exercise appropriate caution in accordance with the installation guide. Pictograms are not technical description of the product.

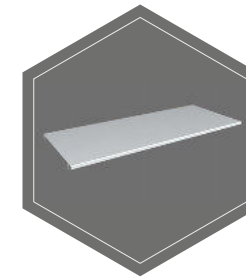
The picture shows an example of a safe for documents - model Hagen 39318 with additional equipment.



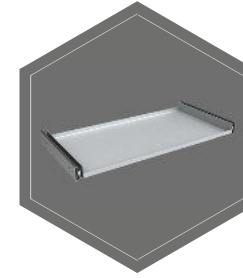
Inner safe



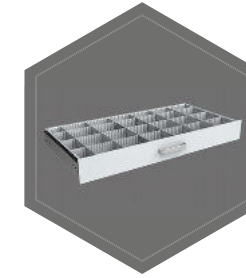
Inner safe with partition wall, 2 - door



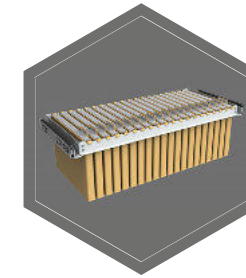
Shelf



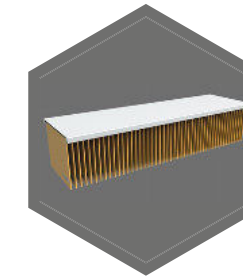
Extendable shelf



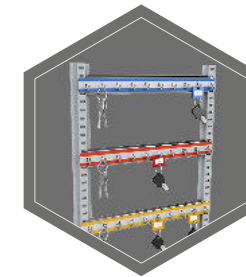
Extendable drawer for individual arrangement



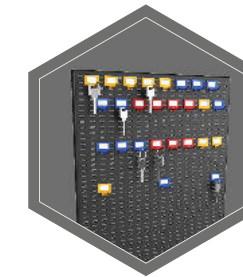
Extendible file frame



Shelf for hanging files



Hook bars



System of hooks on the inner side of the doors