

Model
Luzern



Security level: Class 0 according to EN 1143-1

Suitable for the storage of:

- documents
- valuables
- gun (see additional accessories)
- keys (see additional accessories)

Description

Series Luzern - high security safe - ECB*S certification.

Body: double-walled body (40 mm thick)

Door: multi-walled door construction (84 mm thick)

Locking: 4-way locking bolt system - incl. overlapping profile on the hinge side

Standard option

Lock: high security key lock I class VdS with two keys (95 mm)

Boltwork handle: Up to a safe height of 950 mm with knob, from safe height of 1130 mm with handle

Hinges: external

Door opening angle: 180°

Mounting holes: 1 hole in the floor

Colour: RAL 7035 (light grey)

Model
Luzern

Art. No.	Model	Outer dimensions*			Inner dimensions			Door light		Anchoring		Weight Kg	Shelves Number	Files Number	Volume Liters
		Height mm	Width mm	Depth mm	Height mm	Width mm	Depth mm	Height mm	Width mm	Bottom number	Backwall number				
39600.00	Luzern	350	390	265	270	300	145	238	294	1	-	41	1	-	12
39601.00	Luzern	430	420	445	350	330	325	318	324	1	-	61	1	4	38
39602.00	Luzern	600	420	445	520	330	325	488	324	1	-	76	1	6	56
39603.00	Luzern	780	420	445	700	330	325	668	324	1	-	91	1	8	75
39604.00	Luzern	950	420	445	870	330	325	838	324	1	-	107	2	10	93
39605.00	Luzern	1130	570	485	1050	480	365	1018	474	1	-	153	2	18	184
39606.00	Luzern	1480	570	485	1400	480	365	1368	474	1	-	189	3	24	245
39608.00	Luzern	1830	570	485	1750	480	365	1718	474	1	-	225	4	30	307
39612.00	Luzern**	1130	1245	485	1050	1155	365	1018	1165	1	-	268	2	45	443
39613.00	Luzern**	1300	1245	485	1220	1155	365	1188	1165	1	-	296	3	51	514
39615.00	Luzern**	1830	1245	600	1750	1155	480	1718	1165	1	-	415	4	75	970

* excluding hinges, handles and fittings ** 2-door



Body: double-walled body (40 mm thick)

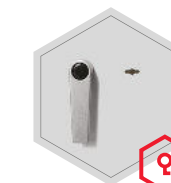


Door: multi-walled door construction (84 mm thick)

Closure options

Standard option

Options available against surcharge



Key lock



Mechanical code lock

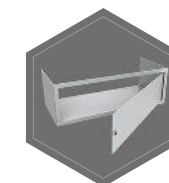


Electronic lock

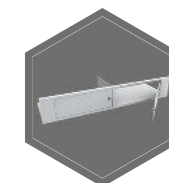


Electronic lock with mechanical emergency (Art. 39602.00-39615.00)

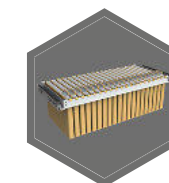
Accessories available against surcharge



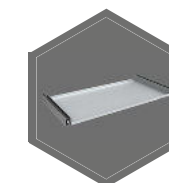
Inner safe



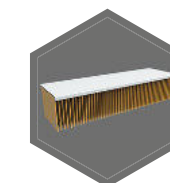
Inner safe with partition wall, 2 - door



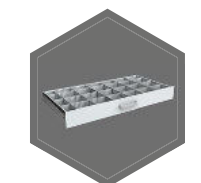
Extensible file frame



Extendable shelf



Shelf for hanging files



Extendable drawer for individual arrangement



All information concerning weight, color and dimensions are noncommittal and subject to errors and changes. Minor deviations are conditional on the production process. Technical changes, modifications and printing errors reserved. Safes may be top-heavy, during commissioning, please exercise appropriate caution in accordance with the installation guide. Pictograms are not technical description of the product.