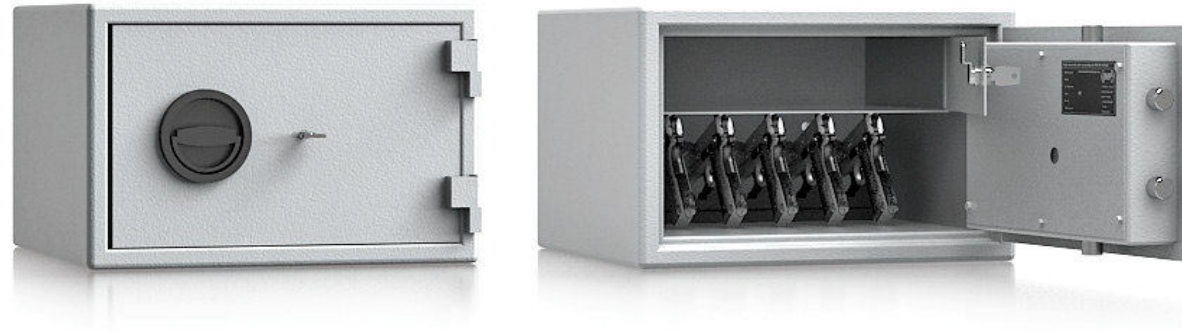


Model  
**Kassel-Calden**



**Security level: Class S2 according to EN 14450**  
**Security level: B according to VDMA 24992 - Conditions May '95**

Suitable for the storage of:

- short weapons
- office documents

**Description**  
 Series Kassel-Calden - gun safes.

**Body:** double-walled body (30 mm thick)  
**Door:** double-walled door construction (53 mm thick)  
**Locking:** 4-way locking bolt system; incl. fix bolts on the hinge side

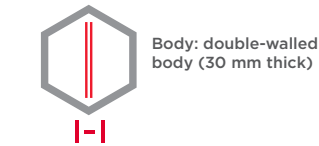
**Standard option**  
**Lock:** high security key lock I class VdS with two keys (65 mm)  
**Boltwork handle:** knob, protruding 12 mm  
**Hinges:** external  
**Door opening angle:** 180°  
**Mounting holes:** 2 holes in the floor and back wall  
**Colour:** RAL 7035 (light grey)



Model  
**Kassel-Calden**

Art. No.	Model	Outer dimensions*			Inner dimensions			Door light		Anchoring		Weight	Shelves	Weapon brackets	Internal safe
		Height mm	Width mm	Depth mm	Height mm	Width mm	Depth mm	Height mm	Width mm	Bottom number	Backwall number	Kg	Number	Number	Height mm
59100	Kassel-Calden	255	395	380	119	335	290	119	335	2	2	30,5	-	5	75

\* excluding hinges, handles and fittings

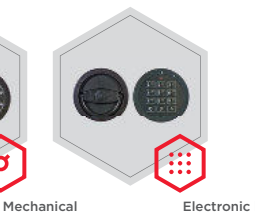


**Closure options**

Standard option



Options available against surcharge



**Alternative options**



All information concerning weight, color and dimensions are noncommittal and subject to errors and changes. Minor deviations are conditional on the production process. Technical changes, modifications and printing errors reserved. Safes may be top-heavy, during commissioning, please exercise appropriate caution in accordance with the installation guide. Pictograms are not technical description of the product.