



**Security level: Class S2 according to EN 14450**  
**Security level: according to B VDMA 24992 -**  
**Conditions May '95**

Drop box in front, with key lock.  
 Max. deposit dimensions H\*B\*T 280\*400\*20 mm.

- Suitable for the storage of:
- office documents, office equipment
  - valuables

**Description**  
 Emden series - rotary drum deposit safes.

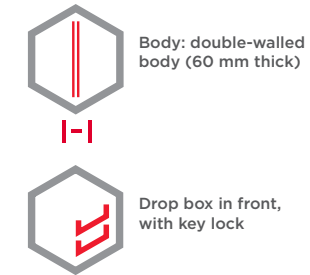
**Body:** double-walled body (60 mm thick)  
**Door:** double-walled door construction (60 mm thick)  
**Locking:** 4-way locking bolt system

**Standard option**  
**Lock:** safe and the drawer, each equipped with high security key lock I class VdS with two keys  
**Boltwork handle:** main door with the knob protruding 12 mm  
**Hinges:** internal  
**Door opening angle:** 90°  
**Mounting holes:** 2 holes in the floor and in backwall  
**Colour:** RAL 7035 (light grey)



Art. No.	Model	Outer dimensions*			Inner dimensions			Door light		Anchoring		Weight	Shelves	Volume
		Height mm	Width mm	Depth mm	Height mm	Width mm	Depth mm	Height mm	Width mm	Bottom number	Backwall number	Kg	Number	Liters
35810	Emden	920	620	520	276	491	390	372	415	2	2	125	1	53
35811	Emden	1120	620	520	476	491	390	572	415	2	2	140	1	91
35812	Emden	1320	620	520	676	491	390	772	415	2	2	160	1	129
35813	Emden	920	620	520	276	491	390	372	415	2	2	300	1	53
35814	Emden	1120	620	520	476	491	390	572	415	2	2	300	1	91
35815	Emden	1320	620	520	676	491	390	772	415	2	2	300	1	129

\* excluding hinges, handles and fittings

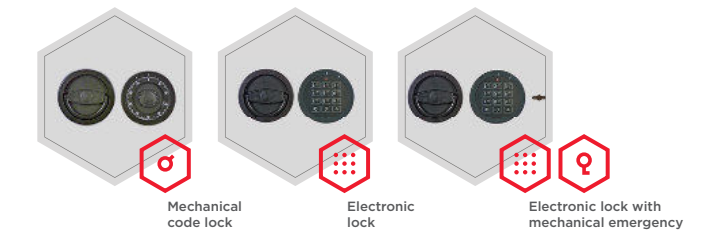


**Closure options**

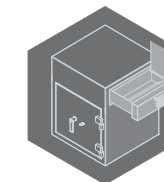
Standard option



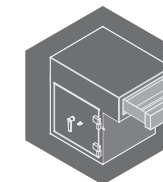
Options available against surcharge



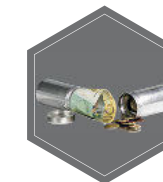
**Accessories available against surcharge**



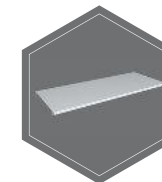
Not protruding drawer / back / side



Protruding drawer / back / side



Safe box



Shelf



All information concerning weight, color and dimensions are noncommittal and subject to errors and changes. Minor deviations are conditional on the production process. Technical changes, modifications and printing errors reserved. Safes may be top-heavy, during commissioning, please exercise appropriate caution in accordance with the installation guide. Pictograms are not technical description of the product.

The picture shows an example of a safe for deposit - model Emden Art. No. 35811 with additional equipment.



Art. No. 35811

