

Model
Düsseldorf Super



Security level: Class S2 according to EN 14450
Security level: B according to VDMA 24992 - Conditions May'95

Suitable for the storage of:

- office documents, office equipment
- gun (see additional accessories)
- keys (see additional accessories)

Description
Series Düsseldorf Super - document safes.

Body: double-walled body (62 mm thick)
Door: multi-walled door construction (91 mm thick)
Locking: 4-way locking bolt system - incl. fix bolts on the hinge side

Standard option
Lock: high security key lock I class VdS with two keys (120 mm)
Boltwork handle: handle, protruding 60mm
Hinges: external
Door opening angle: 180°
Mounting holes: 2 holes in the floor and back wall
Colour: RAL 7035 (light grey)



Model
Düsseldorf Super

Artikel	Modell	Außenmaße *			Innenmaße			Türdurchgang		Verankerung		Gewicht	Anzahl	Anzahl	Volumen
		Höhe	Breite	Tiefe	Höhe	Breite	Tiefe	Höhe	Breite	Boden	Rückwand	kg	Fachböden	Ordner	Liter
		mm	mm	mm	mm	mm	mm	mm	mm	Anzahl	Anzahl				
39100	Düsseldorf Super**	1950	1500	550	1826	1367	393	1789	1339	2	2	474	2 x 4	90	980
39101	Düsseldorf Super**	1950	1850	550	1826	1717	393	1789	1689	2	2	572	2 x 4	110	1232

* excluding hinges, handles and fittings
** 2-door



Body: double-walled body (62 mm thick)

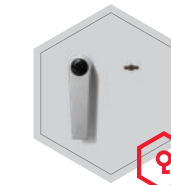


Door: multi-walled door construction (91 mm thick)

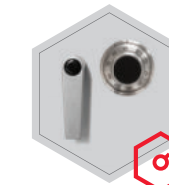
Closure options

Standard option

Options available against surcharge



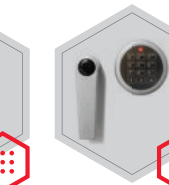
Key lock



Mechanical code lock



Electronic lock

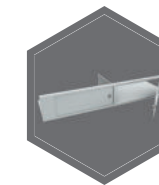


Electronic lock with mechanical emergency

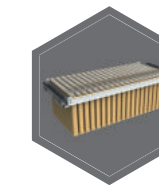
Accessories available against surcharge



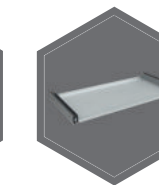
Inner safe



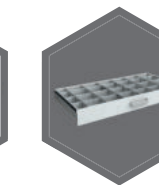
Inner safe with partition wall, 2 - door



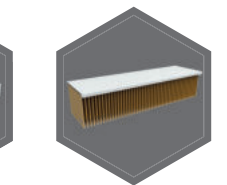
Extensible file frame



Extendable shelf



Extendable drawer for individual arrangement

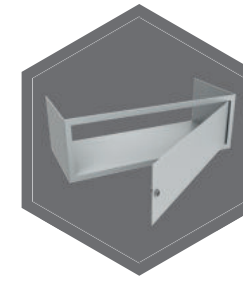


Shelf for hanging files

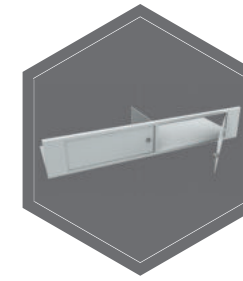


All information concerning weight, color and dimensions are noncommittal and subject to errors and changes. Minor deviations are conditional on the production process. Technical changes, modifications and printing errors reserved. Safes may be top-heavy, during commissioning, please exercise appropriate caution in accordance with the installation guide. Pictograms are not technical description of the product.

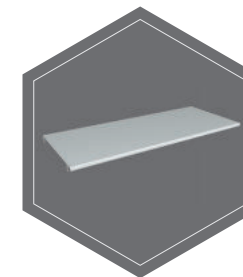
The picture shows an example of a safe for documents - model Hagen 39318 with additional equipment.



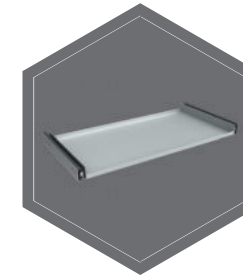
Inner safe



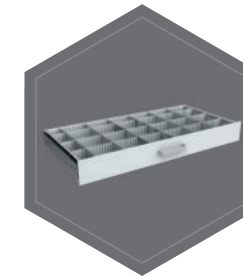
Inner safe with partition wall, 2 - door



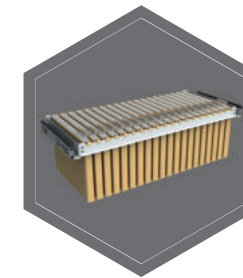
Shelf



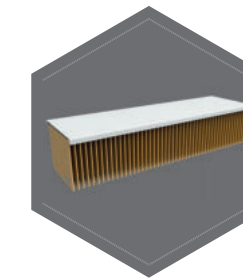
Extendable shelf



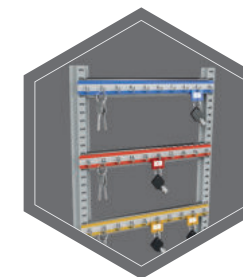
Extendable drawer for individual arrangement



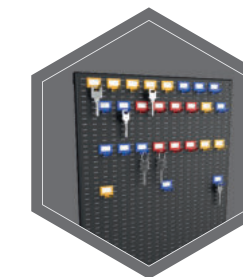
Extendible file frame



Shelf for hanging files



Hook bars



System of hooks on the inner side of the doors