

Model
Düsseldorf



Security level: Class S2 according to EN 14450
Security level: B according to VDMA 24992 - Conditions May'95

Suitable for the storage of:

- office documents, office equipment
- gun (see additional accessories)
- keys (see additional accessories)

Description

Series Düsseldorf - document safes.

Body: double-walled body (62 mm thick)
Door: multi-walled door construction (91 mm thick)
Locking: 4-way locking bolt system - incl. fix bolts on the hinge side

Standard option

Lock: high security key lock I class VdS with two keys (120 mm)
Boltwork handle: handle, protruding 60mm
Hinges: external
Door opening angle: 180°
Mounting holes: 2 holes in the floor and back wall
Colour: RAL 7035 (light grey)



Model
Düsseldorf

Art. No.	Model	Outer dimensions*			Inner dimensions			Door light		Anchoring		Weight Kg	Shelves Number	Files Number	Volume Liters
		Height mm	Width mm	Depth mm	Height mm	Width mm	Depth mm	Height mm	Width mm	Bottom number	Backwall number				
39000.00	Düsseldorf	600	700	500	476	567	343	439	539	2	2	90	1	8	92
39001.00	Düsseldorf	800	700	500	676	567	343	639	539	2	2	110	1	11	131
39002.00	Düsseldorf	1000	700	500	876	567	343	839	539	2	2	134	2	15	170
39003.00	Düsseldorf	1250	700	500	1126	567	343	1089	539	2	2	161	2	21	218
39004.00	Düsseldorf	1500	700	500	1376	567	343	1339	539	2	2	191	3	25	267
39005.00	Düsseldorf	1950	700	500	1826	567	343	1789	539	2	2	241	4	35	355
39006.00	Düsseldorf	1950	950	500	1826	817	343	1789	789	2	2	306	4	50	511
39007.00	Düsseldorf **	1200	1260	500	1076	1127	343	1039	1099	2	2	253	2	45	415
39008.00	Düsseldorf **	1950	950	500	1826	817	343	1789	789	2	2	316	4	50	511
39009.00	Düsseldorf **	1950	1260	500	1826	1127	343	1789	1099	2	2	392	4	75	705

* excluding hinges, handles and fittings
** 2-door



Body: double-walled body (62 mm thick)

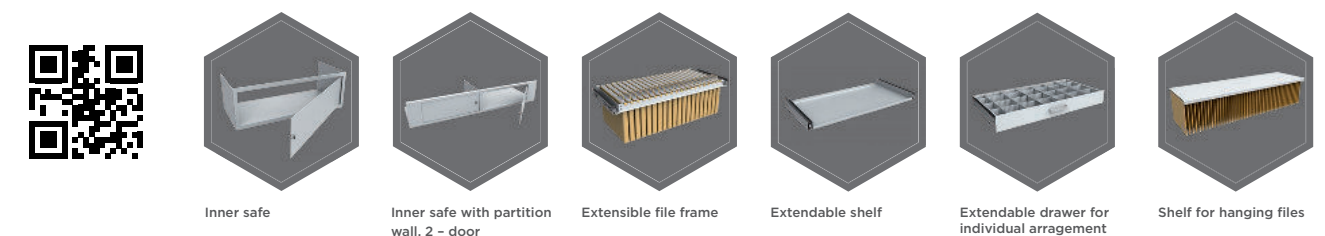


Door: multi-walled door construction (91 mm thick)

Closure options

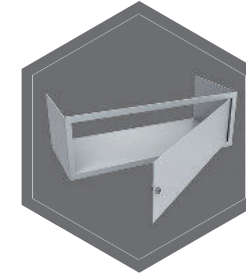


Accessories available against surcharge

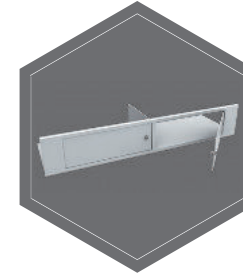


All information concerning weight, color and dimensions are noncommittal and subject to errors and changes. Minor deviations are conditional on the production process. Technical changes, modifications and printing errors reserved. Safes may be top-heavy, during commissioning, please exercise appropriate caution in accordance with the installation guide. Pictograms are not technical description of the product.

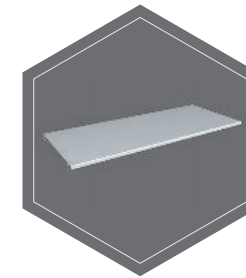
The picture shows an example of a safe for documents - model Hagen 39318 with additional equipment.



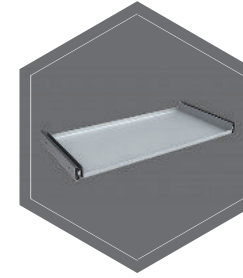
Inner safe



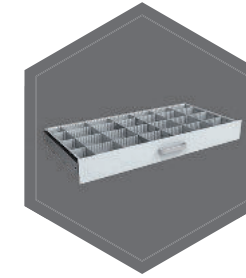
Inner safe with partition wall, 2 - door



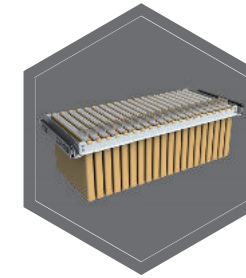
Shelf



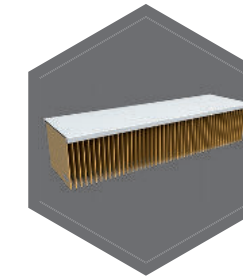
Extendable shelf



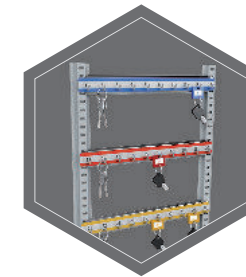
Extendable drawer for individual arrangement



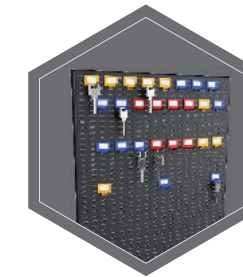
Extendible file frame



Shelf for hanging files



Hook bars



System of hooks on the inner side of the doors