

Model  
**Dresden Freital**



**Security level: Class I according to EN 1143-1**  
**Fire rating: Fire-protected safes according to EN 15659 LFS 30 P**

**In order to save the fire-resistance certificate, the door should be built in the wall strictly according to the mounting manual instruction.**

**Description:**  
Dresden-Freital series - strongroom door, burglar - proof.

**Door:** multi-walled door construction (104 mm thick)  
**Door frame:** double-walled (62 mm thick)  
**Locking:** 3-way locking bolt system - incl. overlapping profile on the hinge side

**Standard option:**  
**Lock:** high security key lock class I VdS with two keys (120 mm)  
**Boltwork handle:** handle, protruding 60 mm  
**Hinges:** external  
**Door opening angle:** 180°  
**Mounting holes:** 9 holes, 4 in each side and 1 in the top  
**Colour:** RAL 7035 (light grey)

Model  
**Dresden Freital**

| Art. No. | Model           | Outer dimensions* |             |             | Door light   |             | Anchoring           |                      |                      | Weight<br>Kg |
|----------|-----------------|-------------------|-------------|-------------|--------------|-------------|---------------------|----------------------|----------------------|--------------|
|          |                 | Height<br>mm      | Width<br>mm | Depth<br>mm | Height<br>mm | Width<br>mm | Left Side<br>number | Right Side<br>number | In the top<br>number |              |
| 55350    | Dresden Freital | 1700              | 900         | 240         | 1590         | 740         | 4                   | 4                    | 1                    | 205          |
| 55351    | Dresden Freital | 1800              | 900         | 240         | 1690         | 740         | 4                   | 4                    | 1                    | 220          |
| 55352    | Dresden Freital | 2000              | 1000        | 240         | 1890         | 840         | 4                   | 4                    | 1                    | 265          |

\* excluding hinges, handles and fittings



Door frame: double-walled (62 mm thick)



Door: multi-walled door construction (104 mm thick)

Closure options



Standard option

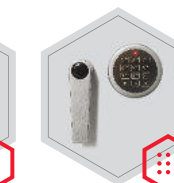


Key lock

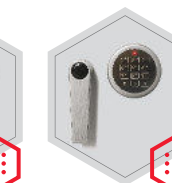
Options available against surcharge



Mechanical code lock

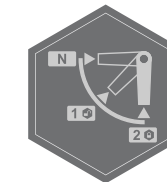


Electronic lock



Electronic lock with mechanical emergency opening

Accessories available against surcharge



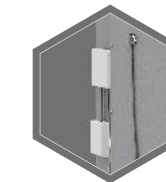
Inner blockage



Additional inside handle



Additional keypad for inside lock



Alarm system elements/Alarm system



All information concerning weight, color and dimensions are noncommittal and subject to errors and changes. Minor deviations are conditional on the production process. Technical changes, modifications and printing errors reserved. Safes may be top-heavy, during commissioning, please exercise appropriate caution in accordance with the installation guide. Pictograms are not technical description of the product.

