

Model
Bern Deposit OV

Model
Bern Deposit OV



Security level: Class D-II according to EN 1143-2

The safes equipped with the drawer with locking system without the key.

The values can be deposited in the so called Safebags, common envelopes, cash boxes and similar containers. Depending on the tenacity of the deposit container, the dimensions of values to be stored can be as follows:
thickness 100 mm / width 220 mm / length 300 mm.

Models with 1300 mm height made with wall brackets for shelving (shelf - option against surcharge).

Suitable for the storage of:

- office documents, office equipment
- valuables

Description

Basel Deposit OV series - drawer deposit safes.

Body: multi-walled body (50 mm thick)

Door: multi-walled door construction (106 mm thick)

Locking: 4-way locking bolt system - incl. overlapping profile on the hinge side

Standard option

Lock: high security key lock I class VdS with two keys

Boltwork handle: main door with the knob protruding 12 mm, the drawer equipped with the grip

Hinges: external

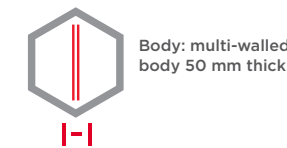
Door opening angle: 180°

Mounting holes: 4 holes in the floor, 1 blind hole in the back wall

Colour: RAL 7035 (light grey)

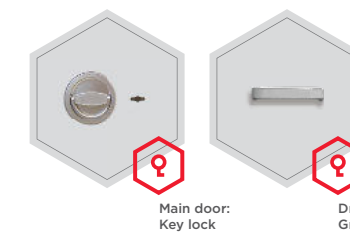
Art. No.	Model	Outer dimensions*			Inner dimensions			Door light		Anchoring		Drawer	Weight
		H mm	W mm	D mm	H mm	W mm	D mm	H mm	W mm	Bottom number	Backwall number		
36360.50	Bern Deposit OV	950	590	550	365	480	390	498	474	4	1 **	in front	284
36361.50	Bern Deposit OV	1300	590	550	715	480	390	848	474	4	1 **	in front	356
36362.50	Bern Deposit OV	950	590	550	365	480	390	498	474	4	1 **	in the back	306
36363.50	Bern Deposit OV	1300	590	550	715	480	390	848	474	4	1 **	in the back	379
36364.50	Bern Deposit OV	950	750	550	365	640	390	498	634	4	1 **	in front	340
36365.50	Bern Deposit OV	1300	750	550	715	640	390	848	634	4	1 **	in front	424
36366.50	Bern Deposit OV	950	590	550+270	365	480	390	498	474	4	1 **	drawer in the back 270 mm	363
36367.50	Bern Deposit OV	1300	590	550+270	715	480	390	848	474	4	1 **	drawer in the back 270 mm	446

* excluding hinges, handles and fittings ** not drilled

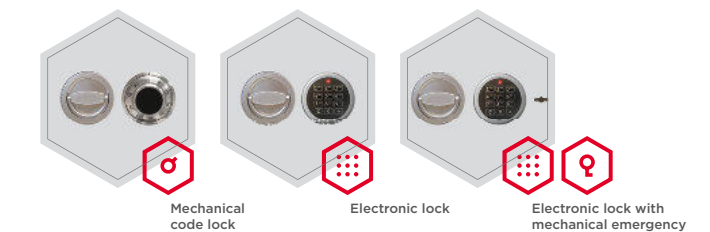


Closure options

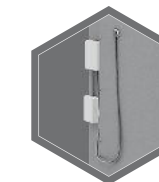
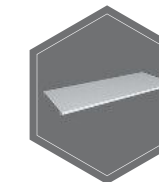
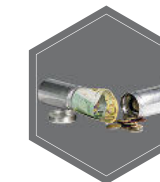
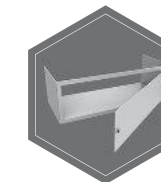
Standard option



Options available against surcharge



Accessories available against surcharge



All information concerning weight, color and dimensions are noncommittal and subject to errors and changes. Minor deviations are conditional on the production process. Technical changes, modifications and printing errors reserved. Safes may be top-heavy, during commissioning, please exercise appropriate caution in accordance with the installation guide. Pictograms are not technical description of the product.

