

## Model Bern Deposit



### Security level: Class D-II according to EN 1143-2

The values can be deposited in the so called Safe-bags, common envelopes, cash boxes and similar containers. Depending on the tenacity of the deposit container, the dimensions of values to be stored can be as follows:  
thickness 70 mm / width 220 mm / length 320 mm.

Models with 1300 mm height made with wall brackets for shelving (shelf - option against surcharge).

Suitable for the storage of:

- office documents, office equipment
- valuables

### Description

Bern Deposit series - drawer deposit safes.

**Body:** multi-walled body (50 mm thick)

**Door:** multi-walled door construction (106 mm thick)

**Locking:** 4-way locking bolt system - incl. overlapping profile on the hinge side

### Standard option

**Lock:** safe and the drawer, each equipped with high security key lock I class VdS with two keys

**Boltwork handle:** main door with the knob protruding 12 mm, the drawer equipped with the grip

**Hinges:** external

**Door opening angle:** 180°

**Mounting holes:** 4 holes in the floor, 1 blind hole in the back wall

**Colour:** RAL 7035 (light grey)



## Model Bern Deposit

| Art. No. | Model        | Outer dimensions* |      |         | Inner dimensions |      |      | Door light |      | Anchoring     |                 | Drawer                               | Weight |
|----------|--------------|-------------------|------|---------|------------------|------|------|------------|------|---------------|-----------------|--------------------------------------|--------|
|          |              | H mm              | W mm | D mm    | H mm             | W mm | D mm | H mm       | W mm | Bottom number | Backwall number |                                      |        |
| 36360.00 | Bern Deposit | 950               | 590  | 550     | 265              | 480  | 390  | 498        | 474  | 4             | 1 **            | in front                             | 284    |
| 36361.00 | Bern Deposit | 1300              | 590  | 550     | 615              | 480  | 390  | 848        | 474  | 4             | 1 **            | in front                             | 356    |
| 36362.00 | Bern Deposit | 950               | 590  | 550     | 265              | 480  | 390  | 498        | 474  | 4             | 1 **            | in the back                          | 283    |
| 36363.00 | Bern Deposit | 1300              | 590  | 550     | 615              | 480  | 390  | 848        | 474  | 4             | 1 **            | in the back                          | 356    |
| 36364.00 | Bern Deposit | 950               | 750  | 550     | 265              | 640  | 390  | 498        | 634  | 4             | 1 **            | drawer in front with money partition | 340    |
| 36365.00 | Bern Deposit | 1300              | 750  | 550     | 615              | 640  | 390  | 848        | 634  | 4             | 1 **            | drawer in front with money partition | 424    |
| 36366.00 | Bern Deposit | 950               | 590  | 550+270 | 265              | 480  | 390  | 498        | 474  | 4             | 1 **            | drawer in the back 270 mm            | 328    |
| 36367.00 | Bern Deposit | 1300              | 590  | 550+270 | 615              | 480  | 390  | 848        | 474  | 4             | 1 **            | drawer in the back 270 mm            | 401    |

\* excluding hinges, handles and fittings \*\* not drilled



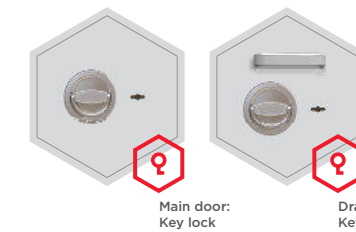
Body: multi-walled body 50 mm thick



Door: multi-walled door construction 106 mm thick

### Closure options

Standard option



Main door: Key lock

Drawer: Key lock

Options available against surcharge

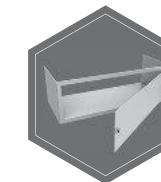


Mechanical code lock

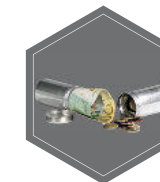
Electronic lock

Electronic lock with mechanical emergency

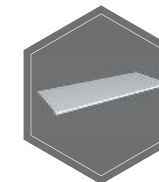
### Accessories available against surcharge



Inner safe



Safe box



shelf



Prepared for alarm system/ alarm system



RAL 7035



RAL 9006



RAL 7024

All information concerning weight, color and dimensions are noncommittal and subject to errors and changes. Minor deviations are conditional on the production process. Technical changes, modifications and printing errors reserved. Safes may be top-heavy, during commissioning, please exercise appropriate caution in accordance with the installation guide. Pictograms are not technical description of the product.