



Security level: Class S2 according to EN 14450
Security level: A according to VDMA 24992 - Conditions May'95
Fire rating: Fire-protected safes according to EN 1047-1 S 60 DIS

The safe has been approved in accordance with EN 1047-1 in fire class 60 DIS. The certification was awarded by VdS they have fire and impact tests.

Suitable for the storage of:
 • data media
 • office documents, office equipment

Description
 Series Bergen - the safes with one-hour protection from fire S 60 DIS.

Body: multi-walled body (80 mm thick)
Door: multi-walled door construction (151 mm thick)
Locking: 4-way locking bolt system

Standard option
Lock: high security key lock I class VdS with two keys (120 mm)
Boltwork handle: handle, protruding 60 mm
Hinges: external
Door opening angle: 180°
Mounting holes: 2 hole in the floor
Colour: RAL 7035 (light grey)

| Art. No. | Model | Outer dimensions* | | | Inner dimensions | | | Door light | | Anchoring | | Weight | Shelves | Volume |
|----------|--------|-------------------|----------|----------|------------------|----------|----------|------------|----------|---------------|-----------------|--------|---------|--------|
| | | Height mm | Width mm | Depth mm | Height mm | Width mm | Depth mm | Height mm | Width mm | Bottom number | Backwall number | Kg | Number | Liters |
| 46550 | Bergen | 635 | 563 | 630 | 400 | 368 | 397 | 400 | 368 | 2 | - | 197 | 1 | 58 |
| 46551 | Bergen | 635 | 563 | 755 | 400 | 368 | 522 | 400 | 368 | 2 | - | 222 | 1 | 77 |

* excluding hinges, handles and fittings



Body: multi-walled body 80 mm thick



Door: multi-walled door construction 151 mm thick

Closure options

Standard option

Options available against surcharge

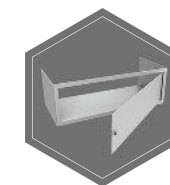


Key lock

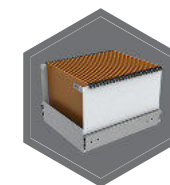


Electronic lock

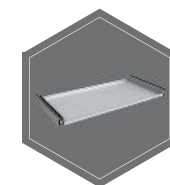
Accessories available against surcharge



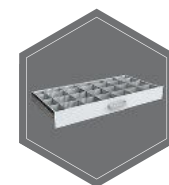
Inner safe



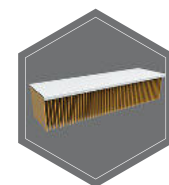
Extendable box for files



Extendable shelf



Extendable drawer for individual arrangement



Shelf for hanging files



All information concerning weight, color and dimensions are noncommittal and subject to errors and changes. Minor deviations are conditional on the production process. Technical changes, modifications and printing errors reserved. Safes may be top-heavy, during commissioning, please exercise appropriate caution in accordance with the installation guide. Pictograms are not technical description of the product.