



Security level: Class III according to EN 1143-1

Preparation for alarm system available against surcharge.

Suitable for the storage of:

- documents
- valuables
- gun
- keys

Description

Series Basel - high security safe - ECB•S certification.

Body: multi-walled body (50 mm thick)

Door: multi-walled door construction (106 mm thick)

Locking: 4-way locking bolt system - incl. overlapping profile on the hinge side

Standard option

Lock: high security key lock II class VdS with two keys (170 mm)

Boltwork handle: handle, protruding 60 mm

Hinges: external

Door opening angle: 180°

Mounting holes: 1 hole in the floor

Colour: RAL 7035 (light grey)

Art. No.	Model	Outer dimensions*			Inner dimensions			Door light		Anchoring		Weight Kg	Shelves Number	Files Number	Volume Liters
		Height mm	Width mm	Depth mm	Height mm	Width mm	Depth mm	Height mm	Width mm	Bottom number	Backwall number				
41900.00	Basel	370	410	305	270	300	145	236	293	1	-	112	1	-	12
41901.00	Basel	450	440	485	350	330	325	316	323	1	-	185	1	4	38
41902.00	Basel	620	440	485	520	330	325	486	323	1	-	235	1	6	56
41903.00	Basel	800	440	485	700	330	325	666	323	1	-	288	1	8	75
41904.00	Basel	970	440	485	870	330	325	836	323	1	-	338	2	10	93
41905.00	Basel	1150	590	485	1050	480	365	1016	473	1	-	492	2	18	184
41906.00	Basel	1500	590	525	1400	480	365	1366	473	1	-	617	3	24	245
41907.00	Basel	1740	590	525	1640	480	365	1606	473	1	-	703	4	27	287
41908.00	Basel	1850	590	525	1750	480	365	1716	473	1	-	742	4	30	307

* excluding hinges, handles and fittings



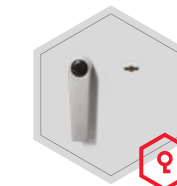
Body: multi-walled body (50 mm thick)



Door: multi-walled door construction (106 mm thick)

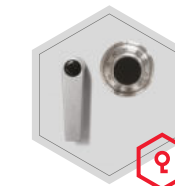
Closure options

Standard option

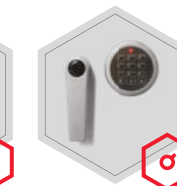


Key lock

Options available against surcharge



Mechanical code lock



Electronic lock

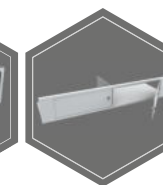


Electronic lock with mechanical emergency (from 41902.00 - 41908.00)

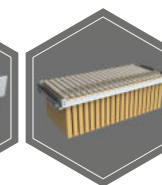
Accessories available against surcharge (for models 41901.00 - 41908.00)



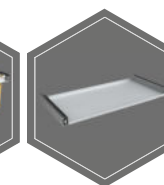
Inner safe



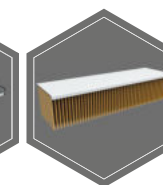
Inner safe with partition wall, 2 - door



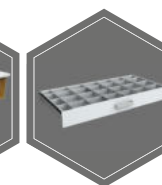
Extensible file frame



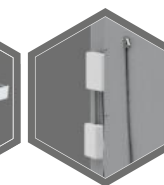
Extendable shelf



Shelf for hanging files



Extendable drawer for individual arrangement



Alarm system elements/Alarm system



Preparation for alarm system



! All information concerning weight, color and dimensions are noncommittal and subject to errors and changes. Minor deviations are conditional on the production process. Technical changes, modifications and printing errors reserved. Safes may be top-heavy, during commissioning, please exercise appropriate caution in accordance with the installation guide. Pictograms are not technical description of the product.

