

Model
Basel Deposit OV



Security level: Class D-III according to EN 1143-2

The safes equipped with the drawer with locking system without the key.

The values can be deposited in the so called Safebags, common envelopes, cash boxes and similar containers. Depending on the tenacity of the deposit container, the dimensions of values to be stored can be as follows:
thickness 100 mm / width 220 mm / length 300 mm.

Models with 1300 mm height made with wall brackets for shelving (shelf - option against surcharge).

Suitable for the storage of:

- office documents, office equipment
- valuables

Description

Basel Deposit OV series - drawer deposit safes.

Body: multi-walled body (50 mm thick)

Door: multi-walled door construction (106 mm thick)

Locking: 4-way locking bolt system - incl. overlapping profile on the hinge side

Standard option

Lock: high security key lock II class VdS with two keys

Boltwork handle: main door with the knob protruding 12 mm, the drawer equipped with the grip

Hinges: external

Door opening angle: 180°

Mounting holes: 4 holes in the floor, 1 blind hole in the back wall

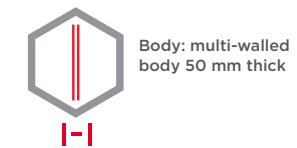
Colour: RAL 7035 (light grey)



Model
Basel Deposit OV

Art. No.	Model	Outer dimensions*			Inner dimensions			Door light		Anchoring		Drawer	Weight
		H mm	W mm	D mm	H mm	W mm	D mm	H mm	W mm	Bottom number	Backwall number		
36800.50	Basel Deposit OV	950	590	550	365	480	390	496	473	4	1**	in front	538
36801.50	Basel Deposit OV	1300	590	550	715	480	390	846	473	4	1**	in front	674
36802.50	Basel Deposit OV	950	590	550	365	480	390	496	473	4	1**	in the back	540
36803.50	Basel Deposit OV	1300	590	550	715	480	390	846	473	4	1**	in the back	672
36804.50	Basel Deposit OV	950	750	550	365	640	390	496	633	4	1**	in front	642
36805.50	Basel Deposit OV	1300	750	550	715	640	390	846	633	4	1**	in front	800
36806.50	Basel Deposit OV	950	590	550+270	365	480	390	496	473	4	1**	drawer in the back 270 mm	627
36807.50	Basel Deposit OV	1300	590	550+270	715	480	390	846	473	4	1**	drawer in the back 270 mm	762

* excluding hinges, handles and fittings ** not drilled



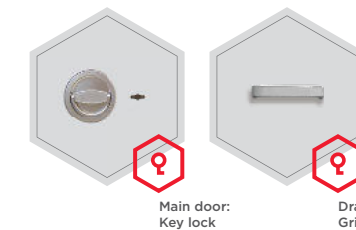
Body: multi-walled body 50 mm thick



Door: multi-walled door construction 106 mm thick

Closure options

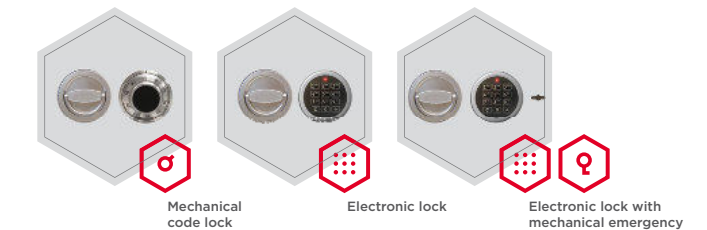
Standard option



Main door: Key lock

Drawer: Grip

Options available against surcharge

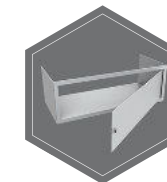


Mechanical code lock

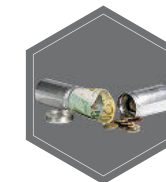
Electronic lock

Electronic lock with mechanical emergency

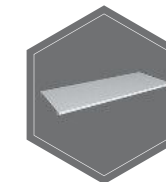
Accessories available against surcharge



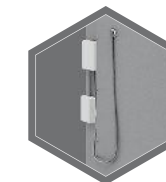
Inner safe



Safe box



shelf



Prepared for alarm system/ alarm system



RAL 7035



RAL 9006



RAL 7024

All information concerning weight, color and dimensions are noncommittal and subject to errors and changes. Minor deviations are conditional on the production process. Technical changes, modifications and printing errors reserved. Safes may be top-heavy, during commissioning, please exercise appropriate caution in accordance with the installation guide. Pictograms are not technical description of the product.