



Security level: Class D-III according to EN 1143-2

The values can be deposited in the so called Safe-bags, common envelopes, cash boxes and similar containers. Depending on the tenacity of the deposit container, the dimensions of values to be stored can be as follows:
thickness 70 mm / width 220 mm / length 320 mm.

Models with 1300 mm height made with wall brackets for shelving (shelf - option against surcharge).

- Suitable for the storage of:
- office documents, office equipment
 - valuables

Description

Basel Deposit series - drawer deposit safes.

- Body:** multi-walled body (50 mm thick)
- Door:** multi-walled door construction (106 mm thick)
- Locking:** 4-way locking bolt system - incl. overlapping profile on the hinge side

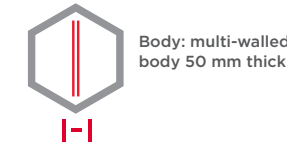
Standard option

- Lock:** safe and the drawer, each equipped with high security key lock II class VdS with two keys
- Boltwork handle:** main door with the knob protruding 12 mm, the drawer equipped with the grip
- Hinges:** external
- Door opening angle:** 180°
- Mounting holes:** 4 holes in the floor, 1 blind hole in the back wall
- Colour:** RAL 7035 (light grey)



Art. No.	Model	Outer dimensions*			Inner dimensions			Door light		Anchoring		Drawer	Weight
		H mm	W mm	D mm	H mm	W mm	D mm	H mm	W mm	Bottom number	Backwall number		
36800.00	Basel Deposit	950	590	550	265	480	390	496	473	4	1 **	in front	500
36801.00	Basel Deposit	1300	590	550	615	480	390	846	473	4	1 **	in front	634
36802.00	Basel Deposit	950	590	550	265	480	390	496	473	4	1 **	in the back	504
36803.00	Basel Deposit	1300	590	550	615	480	390	846	473	4	1 **	in the back	640
36804.00	Basel Deposit	950	750	550	265	640	390	496	633	4	1 **	drawer in front with money partition	595
36805.00	Basel Deposit	1300	750	550	615	640	390	846	633	4	1 **	drawer in front with money partition	750
36806.00	Basel Deposit	950	590	550+270	265	480	390	496	473	4	1 **	drawer in the back 270 mm	560
36807.00	Basel Deposit	1300	590	550+270	615	480	390	846	473	4	1 **	drawer in the back 270 mm	720

* excluding hinges, handles and fittings ** not drilled



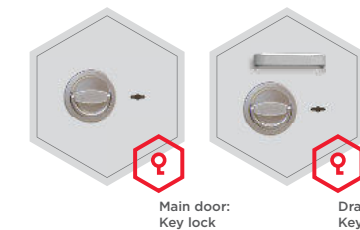
Body: multi-walled body 50 mm thick



Door: multi-walled door construction 106 mm thick

Closure options

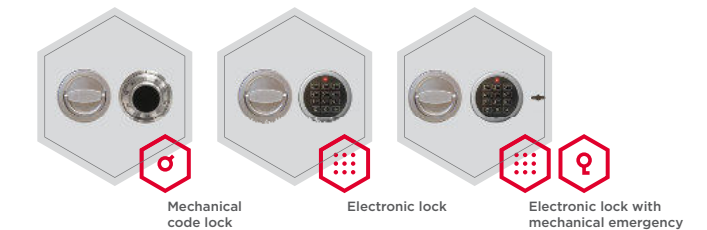
Standard option



Main door: Key lock

Drawer: Key lock

Options available against surcharge

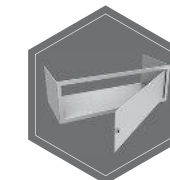


Mechanical code lock

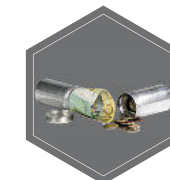
Electronic lock

Electronic lock with mechanical emergency

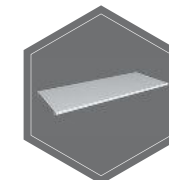
Accessories available against surcharge



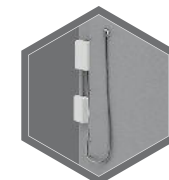
Inner safe



Safe box



shelf



Prepared for alarm system/ alarm system



RAL 7035



RAL 9006



RAL 7024

All information concerning weight, color and dimensions are noncommittal and subject to errors and changes. Minor deviations are conditional on the production process. Technical changes, modifications and printing errors reserved. Safes may be top-heavy, during commissioning, please exercise appropriate caution in accordance with the installation guide. Pictograms are not technical description of the product.