



**Model**  
**Amsterdam-Schiphol**



**Security level: Class V according to EN 1143-1**  
**Fire rating: Fire-protected safes according to EN 15659 LFS 30 P**

**In order to save the fire-resistance certificate, the door should be built in the wall strictly according to the mounting manual instruction.**

**Description:**  
Amsterdam-Schiphol series - strongroom door, burglar - proof.

**Door:** multi-walled door construction (145 mm thick)  
**Door frame:** double-walled (78 mm thick)  
**Locking:** 3-way locking bolt system - incl. overlapping profile on the hinge side

**Standard option:**  
**Lock:** high security key lock VdS II class with two keys (170 mm), one of them folding key and mechanical emergency lock VdS II class  
**Boltwork handle:** handle protruding 60 mm  
**Hinges:** external  
**Door opening angle:** 180°  
**Mounting holes:** 10 holes, 4 in each side and 2 in the top  
**Colour:** RAL 7035 (light grey)



**Model**  
**Amsterdam-Schiphol**

Art. No.	Model	Outer dimensions*			Door light		Anchoring			Weight Kg
		Height mm	Width mm	Depth mm	Height mm	Width mm	Left Side number	Right Side number	In the top number	
55460	Amsterdam-Schiphol	1700	900	300	1574	708	4	4	2	710
55461	Amsterdam-Schiphol	1800	900	300	1674	708	4	4	2	746
55462	Amsterdam-Schiphol	2000	1000	300	1874	808	4	4	2	878

\* excluding hinges, handles and fittings



Door frame: double-walled (78 mm thick)



Door: multi-walled door construction (145 mm thick)

**Closure options**

Standard option

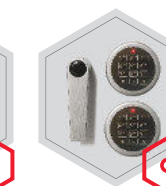
Options available against surcharge



Key lock and mechanical code lock

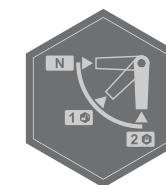


Mechanical code lock



Electronic lock

**Accessories available against surcharge**



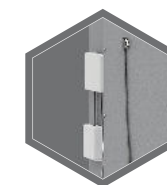
Inner blockage



Additional inside handle



Additional keypad for inside lock



Alarm system elements/Alarm system



**!** All information concerning weight, color and dimensions are noncommittal and subject to errors and changes. Minor deviations are conditional on the production process. Technical changes, modifications and printing errors reserved. Safes may be top-heavy, during commissioning, please exercise appropriate caution in accordance with the installation guide. Pictograms are not technical description of the product.

